

## *I want to help build the playground!*

Name \_\_\_\_\_

Company \_\_\_\_\_

Address \_\_\_\_\_

City \_\_\_\_\_

State \_\_\_\_\_ Zip \_\_\_\_\_

Phone \_\_\_\_\_

Email \_\_\_\_\_

◇ I would like to volunteer my time.

◇ I would like to donate materials or lend tools:

\_\_\_\_\_

\_\_\_\_\_

I would like to donate \$ \_\_\_\_\_

My company would like to donate \$ \_\_\_\_\_

I/my company adopt this component

\_\_\_\_\_

valued at \$ \_\_\_\_\_

**Total contribution** \$ \_\_\_\_\_

**Thank You!**

**Please make checks payable to LDC—Project Playground.** Contributions to this 501(c)(3) non-profit organization are tax deductible to the full extent allowed by law.

## *Volunteer*

Join hundreds of volunteers who, in less than a week, will build the best playground in Hopkinsville. Even if you've never picked up a hammer before, you can help! Be a carpenter, painter, food preparer/server, childcare volunteer, and more. Sign up today!

## *Donate Materials/Lend Tools*

Help us have every piece of construction material donated for the build. All borrowed tools will be returned in the same or better condition, or we will replace them. Call or visit our website to see a list of what we need.

## *Adopt-A-Component*

See details inside to learn how to sponsor specific playground components. Be on the lookout for more ways to make your mark on the playground.

## *Personalize-A-Picket or Paver*

Commemorate your support of the playground with a personalized fence picket for as little as \$50 or a brick paver for as little as \$100. Contact a Project Playground committee member for more details.

## *Contact Us With Questions*

Coordinators	Wende Aldridge	839-9345
	Robert Flick	839-6417
Fundraising	Holly Hampton	881-8634
	Steve Keel	839-5335
Volunteers	Nikki Radford	890-0215
	Brandt Lyon	498-0389
PR/Marketing	Louanne Young	839-6066

# PROJECT PLAYGROUND

KID DESIGNED ~ COMMUNITY BUILT



*Help Us Build  
April 30 - May 4,  
2008*

Project Playground  
P.O. Box 743  
Hopkinsville, KY 42241-0743  
Email: [playground@hopkinsvilleky.us](mailto:playground@hopkinsvilleky.us)  
Website: [www.hopkinsvilleky.us/  
playground](http://www.hopkinsvilleky.us/playground)

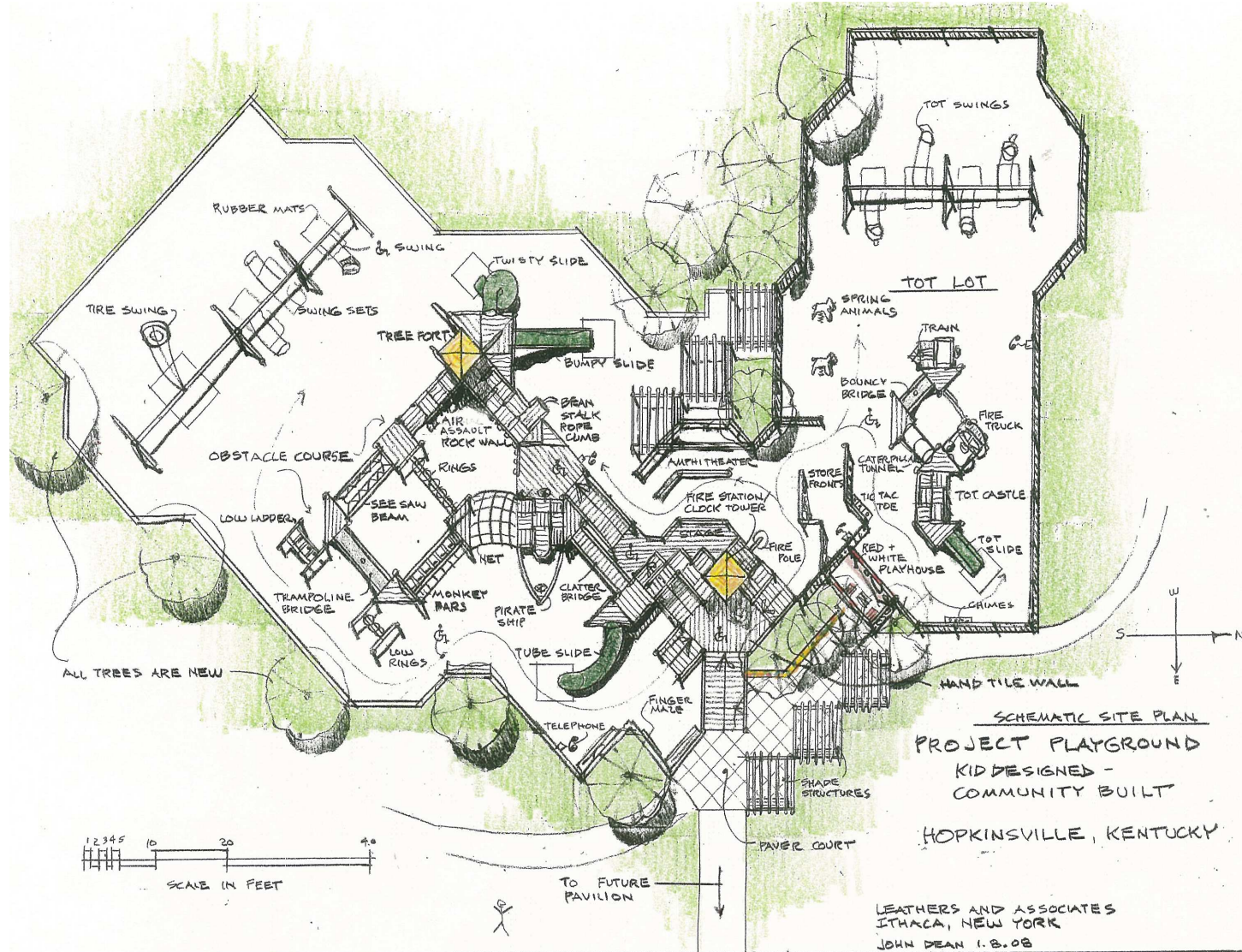
*Made possible by  
generous contributions  
from people like you.*

# Project

Built on 10,000 square feet of land at the North Drive Recreation Complex, this playground will be open for community use at no charge. Project Playground will be available to families from all over Hopkinsville and beyond. This one-of-a-kind playground was designed with help of local school children and includes dozens of customized features! Help build a one-of-a-kind place where children learn, grow, and develop through play—improving their physical, cognitive, and social skills. Nowhere will this be more evident than in this sensor-rich neighborhood playground.

# Adopt-a-Component

Component:	Price (\$):
Tot Castle	22,000
Fire Station/Clock Tower	10,000
Tree Fort	8,000
<i>Pirate Ship</i>	<i>7,000</i>
<i>Spiral Tube Slide</i>	<i>3,800</i>
<i>Wheelchair Access Ramp</i>	<i>2,500</i>
<i>Cargo Net</i>	<i>1,650</i>
<i>Bumpy Slide</i>	<i>1,500</i>
<i>Air Assault Rock Wall</i>	<i>1,300</i>
<i>Red &amp; White Playhouse</i>	<i>1,200</i>
<i>Barn</i>	<i>1,200</i>
<i>Clatter Bridge</i>	<i>1,150</i>
<i>Swings, bay (5 total)</i>	<i>1,000 ea.</i>
<i>Tot Slide</i>	<i>1,000</i>
<i>Bean Stalk Rope Climb</i>	<i>900</i>
<i>See-Saw Beam</i>	<i>900</i>
<i>Fire Pole</i>	<i>800</i>
<i>Caterpillar Tunnel</i>	<i>800</i>
<i>Trampoline Bridge</i>	<i>750</i>
<i>Fire Truck</i>	<i>700</i>
<i>Bouncy Bridge</i>	<i>650</i>
<i>Tractors (2 total)</i>	<i>600 ea.</i>
<i>Finger Maze</i>	<i>600</i>
<i>Rings</i>	<i>575</i>
<i>Monkey Bars</i>	<i>550</i>
<i>Telephone System</i>	<i>500</i>
<i>Chimes</i>	<i>500</i>
<i>Tic-Tac-Toe</i>	<i>400</i>
<i>Low Rings</i>	<i>400</i>
<i>Chain Ladder</i>	<i>400</i>
<i>Low Ladder</i>	<i>300</i>
<i>Benches (10 total)</i>	<i>250 ea.</i>
<i>Vertical Ladder</i>	<i>200</i>



Components in blue have been adopted.