

FRIDAY
SEPT. 26, 2008

28 PAGES, 3 SECTIONS
Volume 121
Number 263

75 cents
51 cents average
home delivery cost

Hopkinsville, KY
Established 1869

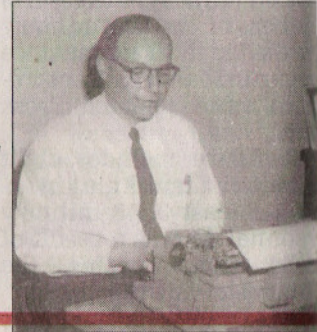
www.kentuckynewera.com

Kentucky New Era.



DISTRICT BRAWL:
Fight overshadows
UHA's win. Sports B1

INQUIRING REPORTER:
Writer shares memories of
Ken Litchfield. Living B5



WEATHER



Tomorrow
Partly sunny, warm.
A10

INSIDE

Teacher of the Year
Local educator receives
honor from Wal-Mart.
News A6

WHO WE ARE

Keawanna Burton, 21,
Hopkinsville, enjoys her
job at the Maxfuel Ex-
press. She says there is
never a dull moment.
"We're always busy do-
ing something or some-
body is coming

Countywide recycling to launch

BY JENNIFER P. BROWN
NEW ERA DEPUTY EDITOR

It's going to get a little easier for Christian County residents to "go green."

Local waste management officials are launching a countywide recycling program, and they expect to have more than 20 drop-off bins in place at various locations in Hopkinsville and Christian County within a couple of months.

Residents who want to par-

ticipate will have to take their recyclable materials to one of the drop-off bins. The material then will be transported to a new recycling center on Mount Zoar-Latham Road, where it will be baled in large quantities to be sold.

Until the new drop-off bins are in place, residents can use the drop-off bin at the Hopkinsville Public Works building on North Main Street.

The recycling program is a joint effort of the Hopkinsville

"When it's in bulk form, as long as it's clean, we can sell (the materials)."

Todd Peters
Recycling coordinator and program manager

and Pennyryle solid waste management authorities.

The purchase of two baling machines and the construction of the new recycling cen-

ter were the keys to making the program work, said Todd Peters, recycling coordinator and program manager.

"When it's in bulk form, as

long as it's clean, we can sell (the materials)," Peters said.

Materials that are being accepted are plastics, aluminum cans, tin cans, newsprint (newspapers and magazines), office paper, corrugated cardboard and paper board.

Items that will not be accepted include plastic bags, medical waste such as syringes, motor oil or antifreeze jugs, paint containers, plastic cut-

SEE LAUNCH, PAGE A6



McCain agrees to participate in debate